

ADAPTIVE RECREATION

RESOURCE LIST

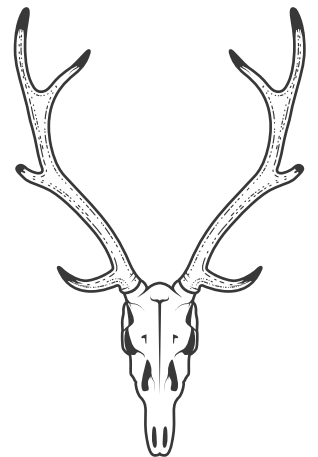
FISHING

1. **CAMP BULLWHEEL** [HTTP://CAMPBULLWHEEL.ORG/](http://CAMPBULLWHEEL.ORG/)
 - A. LOCATION: ENNIS, MT
 - B. WHAT: WHEELCHAIR-ACCESSIBLE RAFTS, ADAPTIVE FISHING EQUIPMENT, LODGING AVAILABLE ONSITE
 - C. WHO: RANGE OF DISABILITIES (UP TO SIP-AND-PUFF)
2. **FLATHEAD RAFT COMPANY- HYDROLOGISTICS**
[HTTPS://WWW.FLATHEADRAFTCOMPANY.COM/FISHING-ADVENTURES-1](https://WWW.FLATHEADRAFTCOMPANY.COM/FISHING-ADVENTURES-1)
 - A. LOCATION: LOWER FLATHEAD RIVER (POLSON, MT)
 - B. WHAT: WHEELCHAIR ACCESSIBLE DRIFT BOATS
 - C. COST: \$600 FOR BOAT AND TWO GUESTS



HUNTING

1. **OUTDOOR BUDDIES** [HTTPS://OUTDOORBUDDIES.ORG/](https://OUTDOORBUDDIES.ORG/)
 - A. LOCATION: COLORADO
 - B. WHAT: VARIOUS HUNTING AND FISHING OPPORTUNITIES
 - C. COST: FREE
2. **WYOMING DISABLED HUNTERS**
[HTTPS://WYOMINGDISABLEDHUNTERS.ORG/](https://WYOMINGDISABLEDHUNTERS.ORG/)
 - A. LOCATION: CODY, WY
 - B. COST: FREE



ACCESSIBLE MAPS

1. **TRAILLINK**
[HTTPS://WWW.TRAILLINK.COM/STATEACTIVITY/MT-WHEELCHAIR-ACCESSIBLE-TRAILS/](https://WWW.TRAILLINK.COM/STATEACTIVITY/MT-WHEELCHAIR-ACCESSIBLE-TRAILS/)
 - A. MAP OF WHEELCHAIR ACCESSIBLE TRAILS
 - B. COST: FREE
2. **ACCESSIBLE RECREATION OPPORTUNITIES**
[HTTP://RECREATION.RURALINSTITUTE.UMT.EDU/MT/SEARCH_FORM.ASP](http://RECREATION.RURALINSTITUTE.UMT.EDU/MT/SEARCH_FORM.ASP)
 - A. MAP OF ACCESSIBLE RECREATION SITES DEPENDING ON ACTIVITY OF CHOICE (FISHING, HIKING, BIKING, CAMPING, ETC.)
 - B. COST: FREE



SUMMER SPORTS

1. DREAM ADAPTIVE

[HTTPS://WWW.DREAMADAPTIVE.ORG/](https://www.dreamadaptive.org/)

- A. LOCATION: WHITEFISH, MT
- B. SPRING-FALL: MOTORIZED WATER SPORTS, MOUNTAIN BIKING, PADDLE BOARDING
- C. COST: EACH PROGRAM VARIES. VETERANS AND ACTIVE-DUTY WITH DISABILITY PARTICIPATE AT NO COST; FINANCIAL AID AND SCHOLARSHIPS ARE ALSO AVAILABLE.
 - I. WATER SPORTS: \$15/DAY
 - II. CYCLING: LESSON PACKAGES RANGING FROM \$120-\$160
 - III. PADDLE PROGRAM: \$10/SESSION

2. EAGLE MOUNT [HTTPS://EAGLEMOUNT.ORG/](https://eaglemount.org/)

- A. LOCATIONS: BOZEMAN, BILLINGS, GREAT FALLS
- B. WHAT: AQUATICS, ARTS, ADAPTIVE HORSEMANSHIP, CYCLING
- C. COST: DEPENDENT ON ACTIVITY, 90% OF PROGRAM COSTS USUALLY COVERED BY DONORS

3. TEAM RIVER RUNNER

[HTTPS://WWW.TEAMRIVERRUNNER.ORG/MONTANA-BOZEMAN/](https://www.teamriverrunner.org/montana-bozeman/)

- A. LOCATION: ALL OVER THE US, INCLUDING CLASSES IN BOZEMAN
- B. WHAT: ADAPTIVE PADDLE SPORTS (RAFT, PADDLEBOARD, KAYAK)
- C. WHO: VETERANS
- D. COST: FREE

4. MISSOULA ADAPTIVE RECREATION AND SPORTS (MARS)

[HTTPS://WWW.MISSOULAADAPTIVEREC.ORG/EVENTS](https://www.missoulaadaptiverec.org/events)

- A. LOCATION: MISSOULA
- B. WHAT: RAFTING, CYCLING, ETC. SPORTS CHANGE BASED ON SEASON
- C. PROVIDES ADAPTIVE EQUIPMENT NEEDED FOR PARTICIPATION
- D. COST: DEPENDS ON ACTIVITY; FINANCIAL AID AVAILABLE

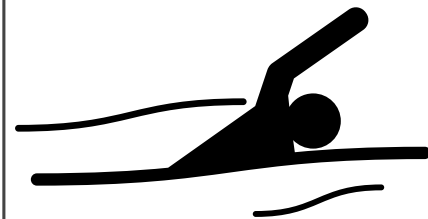
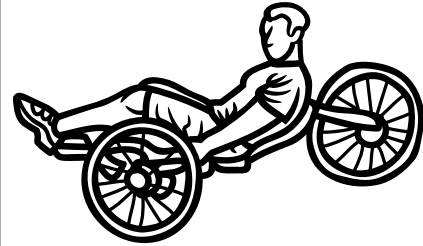
5. CHALLENGED ATHLETES FOUNDATION

[HTTPS://WWW.CHALLENGEDATHLETES.ORG/CAMPS-CLINICS/](https://www.challengedathletes.org/camps-clinics/)

- A. LOCATION: ALL OVER US
- B. CLINICS AVAILABLE FOR VARIOUS SPORTS (BIKING, GOLF, SURFING, FLY FISHING, ETC)
- C. COST: FREE

6. EMPOWER SCI [HTTPS://WWW.EMPOWERSCI.ORG/](https://www.empowersci.org/)

- A. LOCATION: MISSOULA (AMONG OTHER OPPORTUNITIES IN OTHER LOCATIONS ACROSS THE US)
- B. WHAT: 1-WEEK PROGRAM FOR PEOPLE WITH SCI FOCUSED ON PEER MENTORING, REHAB COUNSELING, AND FORMAL PT, OT, AND RECREATIONAL THERAPY. MISSOULA PROGRAM IN SPRING.
- C. COST: \$2,000 (SCHOLARSHIPS AVAILABLE)



WINTER SPORTS

1. DREAM ADAPTIVE

[HTTPS://WWW.DREAMADAPTIVE.ORG/](https://www.dreamadaptive.org/)

A. LOCATION: WHITEFISH, MT

B. NORDIC/CROSS-COUNTRY SKIING,
SNOWBOARDING, ALPINE SKIING

C. COST: VETERANS AND ACTIVE-DUTY WITH
DISABILITY PARTICIPATE AT NO COST

I. LESSONS: \$50 WITH RENTALS, \$30 WITHOUT
RENTALS

2. EAGLE MOUNT [HTTPS://EAGLEMOUNT.ORG/](https://eaglemount.org/)

A. LOCATIONS: BOZEMAN, BILLINGS, GREAT FALLS

B. WHAT: SKIING, ICE SKATING, SNOWSHOEING,
SNOWBOARDING

C. COST: DEPENDENT ON ACTIVITY, 90% OF PROGRAM
COSTS USUALLY COVERED BY DONORS

3. MISSOULA ADAPTIVE RECREATION AND SPORTS (MARS)

[HTTPS://WWW.MISSOULAADAPTIVEREC.ORG/EVENTS](https://www.missoulaadaptiverec.org/events)

A. LOCATION: MISSOULA

B. WHAT: SLED HOCKEY; SPORTS CHANGE BASED ON
SEASON

C. PROVIDES ADAPTIVE EQUIPMENT NEEDED FOR
PARTICIPATION

D. COST: DEPENDS ON ACTIVITY; FINANCIAL AID
AVAILABLE

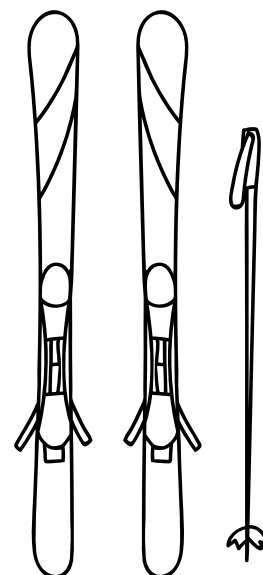
4. EAGLE MOUNT

[HTTPS://WWW.EAGLEMOUNT.NET/SLED-HOCKEY/](https://www.eaglemount.net/sled-hockey/)

A. LOCATION: GREAT FALLS

B. SLED HOCKEY

C. COST: \$25 REGISTRATION, EQUIPMENT INCLUDED



HORSEMANSHIP

1. TWO BEAR THERAPEUTIC RIDING CENTER

[HTTPS://WWW.TWOBEARTRC.ORG/INDEX.HTML](https://www.twobeartrc.org/index.html)

1. LOCATION: WHITEFISH

2. PEDIATRIC PT, ADAPTIVE HORSEMANSHIP

3. COST: \$45/SESSION, SCHOLARSHIPS AVAILABLE
BASED ON NEED

2. TROTTING HORSE THERAPEUTIC RIDING

[HTTPS://TROTTINGHORSE THERAPEUTIC.ORG/THERAPE
UTIC-RIDING/](https://trottinghorsetherapeutic.org/therapeutic-riding/)

1. LOCATION: MISSOULA

2. WHAT: THERAPEUTIC RIDING, OCCUPATIONAL
THERAPY, PHYSICAL THERAPY

3. COST: \$65/1-HR SESSION, ACCEPTS BIG SKY WAIVER
(MEDICAID)

3. EAGLE MOUNT

[HTTPS://EAGLEMOUNT.ORG/PROGRAM/HORSEMANSHI
P_](https://eaglemount.org/program/horsemanSHIP)

A. LOCATION: BOZEMAN

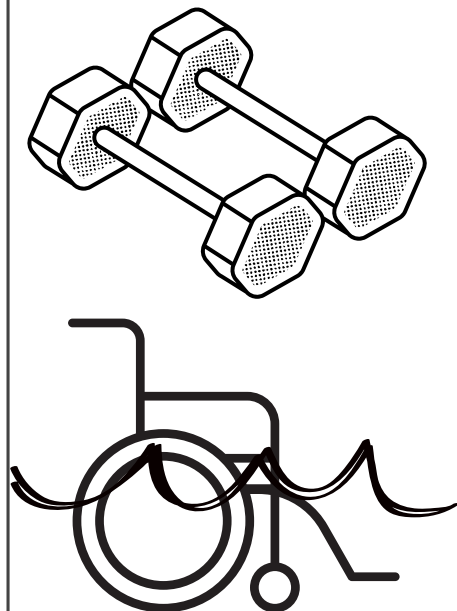
B. WHAT: HORSEMANSHIP LESSONS/CAMPS

C. COST: \$120-\$350



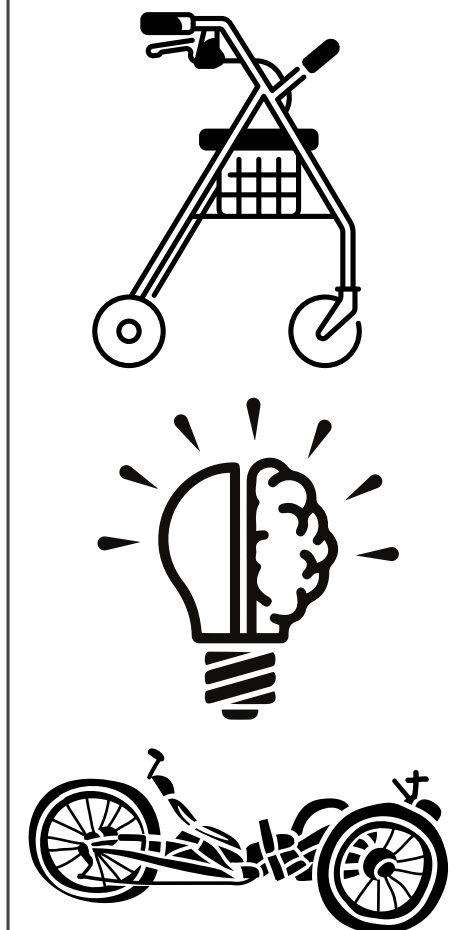
ACCESSIBLE GYMS & POOLS

- 1. EAGLE MOUNT (GYM)**
[HTTPS://EAGLEMOUNT.ORG/PROGRAM/GYM](https://eaglemount.org/program/gym)
A. LOCATION: BOZEMAN
B. WHEELCHAIR ACCESSIBLE GYM; PRIMARILY DESIGNED FOR SCI
- 2. ADAPTIVE PERFORMANCE CENTER (GYM)**
[HTTPS://WWW.ADAPTIVEPERFORMANCECENTER.ORG/](https://www.adaptiveperformancecenter.org/)
A. LOCATION: BILLINGS & HELENA
B. WHO: VETERANS WITH/WITHOUT DISABILITY
- 3. EAGLE MOUNT (POOL)**
[HTTPS://EAGLEMOUNT.ORG/PROGRAM/AQUATICS](https://eaglemount.org/program/aquatics)
A. LOCATION: BOZEMAN
B. EQUIPPED WITH LIFT AND POOL WHEELCHAIRS
- 4. SPLASH MONTANA & CURRENTS AQUATIC CENTER (POOLS)**
A. LOCATION: MISSOULA
B. EQUIPPED WITH WHEELCHAIR LIFT AND WATER WHEELCHAIR



ADAPTIVE EQUIPMENT

- 1. MONTECH**
[HTTPS://MONTECH.RURALINSTITUTE.UMT.EDU/EQUIPM ENT-LOANS-REUSE/](https://montech.ruralinstitute.umn.edu/equipment-loans-reuse/)
A. LOCATIONS: MISSOULA, MT & BILLINGS, MT (SHIPPING AVAILABLE FOR MOST ITEMS)
B. WHAT: RENT ANYTHING FROM STANDING FRAMES, TRANSFER AIDS, TECHNOLOGY, SELF-CARE ITEMS, COMMUNICATION AIDS, SWITCHES, RECREATIONAL EQUIPMENT, ETC.
C. 1:1 CONSULTATIONS AVAILABLE
- 2. WHEELS ACROSS MONTANA (WAM)**
[HTTPS://MONTECH.RURALINSTITUTE.UMT.EDU/WHEEL S-ACROSS-MONTANA-PROGRAM-WAM/](https://montech.ruralinstitute.umn.edu/wheels-across-montana-program-wam/)
A. LOCATIONS: MISSOULA, HELENA, BILLINGS, FORT PECK, DILLON
B. WHAT: ADAPTIVE TRIKES AND BIKING EQUIPMENT AVAILABLE FOR 30 DAY LOANS
- 3. BE ADAPTIVE EQUIPMENT**
[HTTPS://BEADAPTIVE.COM/HOME-MOBILE/](https://beadaptive.com/home-mobile/)
A. WHAT: FISHING AND HUNTING (SHOOTING AND ARCHERY) ADAPTIVE EQUIPMENT
- 4. BIG SKY IMAGINATION**
[HTTPS://WWW.BIGSKYIMAGINATION.COM/OUTDOOR-PRODUCTS-FOR-THE-DISABLED.HTML](https://www.bigskyimagination.com/outdoor-products-for-the-disabled.html)
A. WHAT: BINOCULAR STANDS, RIFLE RESTS, PISTOL RESTS, FLASHLIGHT HOLDER



FUNDING OPPORTUNITIES

1. **CHALLENGED ATHLETES FOUNDATION**

[HTTPS://WWW.CHALLENGEDATHLETES.ORG/GRANTS/](https://www.challengedathletes.org/grants/)

A. PROVIDES GRANT FUNDING FOR ADAPTIVE EQUIPMENT FOR THOSE WANTING TO GET BACK INTO RECREATION

2. **SHIRLEY RYAN ABILITY LAB**

[HTTPS://WWW.SRALAB.ORG/LIFECENTER/RESOURCES/LISTING-GRANTS-ADAPTIVE-SPORTS-EQUIPMENT-AUTOMOTIVE-AND-HOME-NEEDS](https://www.sralab.org/lifecenter/resources/listing-grants-adaptive-sports-equipment-automotive-and-home-needs)

A. GRANTS AVAILABLE FOR GENERAL NEEDS, SPORTS EQUIPMENT, AUTOMOBILE MODIFICATIONS, HOME MODIFICATIONS, TRANSPORTATION, THERAPY SERVICES, ETC.

3. **HIGH FIVES FOUNDATION**

[HTTPS://HIGHFIVESFOUNDATION.ORG/GRANT-APPLICATION/](https://highfivesfoundation.org/grant-application/)

A. GRANTS AVAILABLE FOR THOSE WISHING TO PURSUE OUTDOOR ADVENTURE SPORTS

B. 3 GRANT CYCLES PER YEAR

